

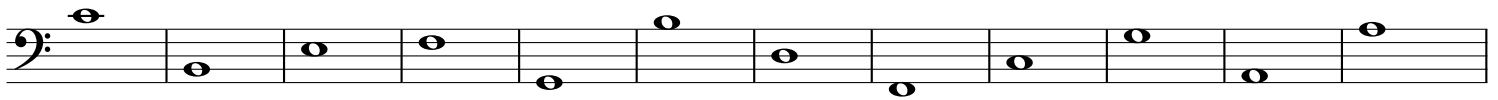
Note Reading Review

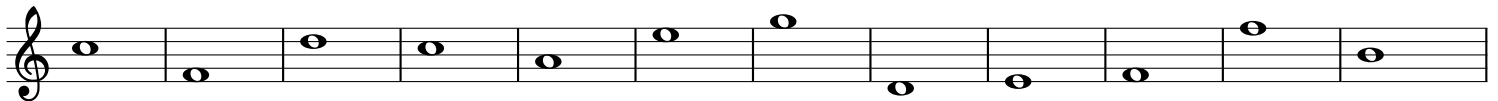
Studio of Darryl Cremasco

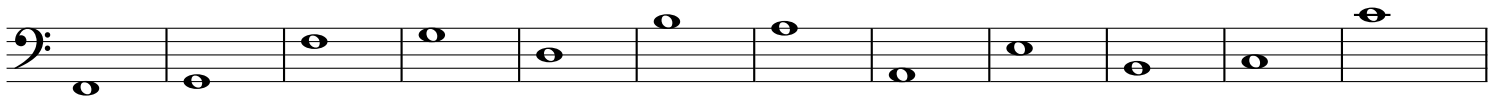
darrylspiano.com

1. Name the following notes









2. Ledger Line Review

A musical staff with a treble clef. It contains 12 measures of music. The notes are: G4 (first ledger line), A4 (first space), B4 (second space), C5 (second line), D5 (third space), E5 (third line), F5 (third space), G5 (third line), A5 (third space), B5 (third space), C6 (third space), and D6 (third space). Each note is a half note with a stem pointing down. Below the staff are 12 dashed lines for writing.

A musical staff with a bass clef. It contains 12 measures of music. The notes are: C3 (first ledger line), D3 (first ledger line), E3 (first ledger line), F3 (first ledger line), G3 (first ledger line), A3 (first ledger line), B3 (first ledger line), C4 (first ledger line), D4 (first ledger line), E4 (first ledger line), F4 (first ledger line), and G4 (first ledger line). Each note is a half note with a stem pointing up. Below the staff are 12 dashed lines for writing.

3. Anything Goes!

A musical staff with a treble clef. It contains 12 measures of music. The notes are: G4 (first ledger line), A4 (first space), B4 (second space), C5 (second line), D5 (third space), E5 (third line), F5 (third space), G5 (third line), A5 (third space), B5 (third space), C6 (third space), and D6 (third space). Each note is a half note with a stem pointing down. Below the staff are 12 dashed lines for writing.

A musical staff with a bass clef. It contains 12 measures of music. The notes are: C3 (first ledger line), D3 (first ledger line), E3 (first ledger line), F3 (first ledger line), G3 (first ledger line), A3 (first ledger line), B3 (first ledger line), C4 (first ledger line), D4 (first ledger line), E4 (first ledger line), F4 (first ledger line), and G4 (first ledger line). Each note is a half note with a stem pointing up. Below the staff are 12 dashed lines for writing.