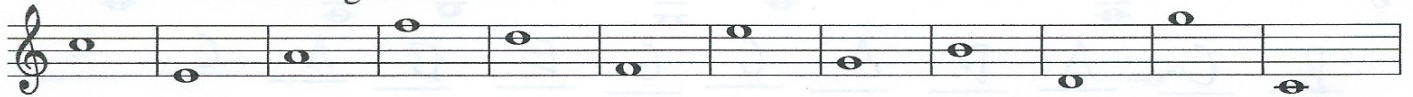


Note Reading Review

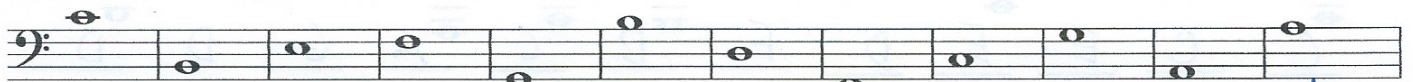
Studio of Darryl Cremasco

darrylspiano.com

1. Name the following notes



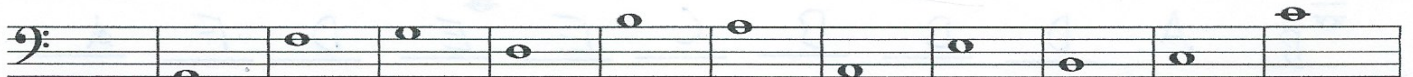
C E A F D F E G B D G C



C B E F G B D F C G A A



C F D C A E G D E F F B



F G F G D B A A E B C C

2. Ledger Line Review

Handwritten musical notation on a treble clef staff. The notes are placed on ledger lines above the staff. The notes are: B (first ledger line), C (second ledger line), A (third ledger line), D (third space), A (second space), C (second space), G (first space), E (first space), B (first space), A (first space), C (first space), C (first space).

Handwritten musical notation on a treble clef staff. The notes are placed on ledger lines below the staff. The notes are: C (second ledger line), F (third ledger line), D (third ledger line), B (third ledger line), G (third ledger line), E (third ledger line), F (third ledger line), D (third ledger line), F (third ledger line), A (third ledger line), F (third ledger line), C (third ledger line).

Handwritten musical notation on a bass clef staff. The notes are placed on ledger lines above the staff. The notes are: C (second ledger line), C (second ledger line), E (third ledger line), E (third ledger line), D (third ledger line), F (third ledger line), B (third ledger line), C (third ledger line), A (third ledger line), G (third ledger line), D (third ledger line), D (third ledger line).

Handwritten musical notation on a bass clef staff. The notes are placed on ledger lines below the staff. The notes are: A (second ledger line), A (second ledger line), C (third ledger line), E (third ledger line), F (third ledger line), D (third ledger line), B (third ledger line), C (third ledger line), F (third ledger line), E (third ledger line), B (third ledger line), C (third ledger line).

3. Anything Goes!

Handwritten musical notation on a treble clef staff. The notes are placed on ledger lines above the staff. The notes are: C (first ledger line), C (first ledger line), C (first ledger line), G (first space), E (first space), B (first space), G (first space), F (first space), B (first space), B (first space), D (first space), A (first space).

Handwritten musical notation on a treble clef staff. The notes are placed on ledger lines below the staff. The notes are: B (second ledger line), F (third ledger line), F (third ledger line), E (third ledger line), D (third ledger line), G (third ledger line), A (third ledger line), C (third ledger line), D (third ledger line), F (third ledger line), C (third ledger line).

Handwritten musical notation on a bass clef staff. The notes are placed on ledger lines above the staff. The notes are: B (second ledger line), A (second ledger line), D (second ledger line), B (second ledger line), B (second ledger line), C (second ledger line), E (second ledger line), E (second ledger line), D (second ledger line), F (second ledger line), A (second ledger line).

Handwritten musical notation on a bass clef staff. The notes are placed on ledger lines below the staff. The notes are: C (second ledger line), C (second ledger line), B (third ledger line), E (third ledger line), A (third ledger line), A (third ledger line), B (third ledger line), D (third ledger line), G (third ledger line), F (third ledger line), G (third ledger line).